



HG Thermaform Solutions, Inc.

# HG Keystone Fascia Trim

Installation Instructions for Trex® Compatible Products

## Important Installation Notes

- ▶ All HG Fascia Trim products require a 1-inch overhang of surface deck boards to cover the raw cut end (see Diagram 1 below).
- ▶ Fascia boards must be flat against the rim joist. Any cupping in the fascia boards may result in cracking, breaking, or other failure of HG Fascia Trim.
- ▶ Do not use fascia screws for installation. Only use manufacturer approved deck screws in HG Fascia Trim. Be careful not to over-tighten the screws.
- ▶ Pre-drilling holes in HG Fascia Trim is highly recommended.

Check out our video guides!



## Prepare Fascia Boards

1. Ensure deck boards have a 1-inch overhang according to Diagram 1 (below).
2. Install fascia boards with a 4-3/4 inches gap between each side and secure with screws according to the manufacturer screw patterns.
3. Position the Fascia Keystone Trim in the gap and ensure proper fit according to Diagram 2 (below). There should be a 1/4 inch gap for natural expansion behind the Fascia Keystone Trim.

Diagram 1 - Deck board Overhang

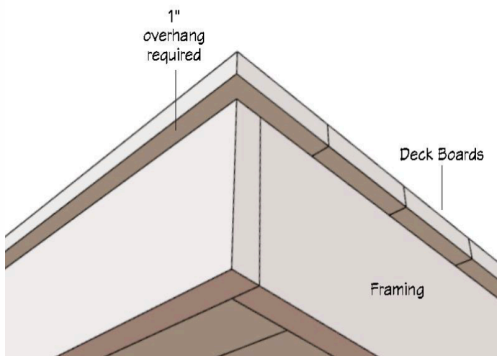


Diagram 2 - Placement and Fit

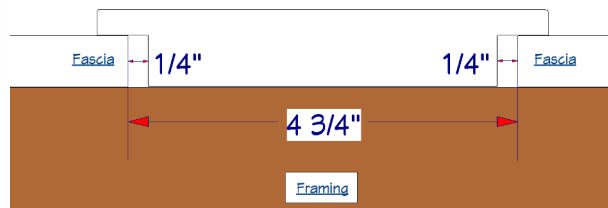
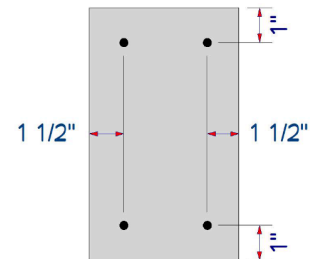


Diagram 3 - Screw Pattern



## Install Fascia Keystone Trim

1. Secure the Fascia Keystone Trim with deck screws to attach according to Diagram 3 (above).
  - a. Four (4) deck screws are needed per Fascia Keystone Trim piece placed 1 inch from top and bottom edges and 1-1/2 inches from the sides.
  - b. Be sure not to over-tighten the screws during this process or the Fascia Keystone trim may be damaged.
2. Check the fit of your Fascia Keystone Trim. Refer to Image 1 (below) for an example of a completed installation.



Your HG Fascia Keystone Trim piece is now installed!

We hope you enjoy the new look of your deck!

If you have any questions about the product or installation, please reach out to us via email or phone!



Review us on Amazon!

